

Tikipunga Primary School

Kia taki manawa ai te aronga wawata, te ekenga hoki o pae tawhiti
Respecting aspirations, walking together, achieving our goals

PANUI 14th March 2025

From Whaea Judy:

Tēnā koutou katoa

Week six is here, and we are officially halfway through Term One. Remember to stay up to date by checking our school website and Facebook page, or by speaking with your child's classroom teacher.

Sickness

We have been experiencing bouts of sickness across the school, and it is appreciated if you are keeping your sick child at home while they recover. Let our front office know if your child is absent for whatever reason.

Netball

Players - Netball notices went out last week to gauge interest from players. Please return these asap to Whaea Lena so teams can be organised.

Managers – Team managers are needed on game days. If you interested, please speak to Whaea Lychia in Room 13 who is our netball coordinator.

Footpaths and Gardens

Please use the footpaths and ramps when moving around the school, rather than crossing the carpark and climbing over or through the silver gate by the front turf. We want to keep our students safe by keeping them out of the car park.

Upcoming Staff Professional Development

On Monday 12th May (in term two) we are having a Teacher Only Day on to unpack and understand the Maths Curriculum. This opportunity will enable our teachers to delve deeper into the Maths curriculum, ensuring they are equipped to provide the best possible learning experiences for our students.

Ngā mihi
Whaea Judy

IMPORTANT KURA DATES:

Monday 17th March	Board of Trustees Meeting – 4.30pm
Thursday 3rd April	New Entrant Vision & Hearing Screening
Friday 11th April	Last Day of Term 1
Monday 28th April	First Day of Term 2
Monday 12th May	Teacher Only Day – No school for Students
Monday 19th May	Board of Trustees Meeting – 4.30pm



OUR DETAILS:

Acting Principal:
Judy Panapa
Address:
11 Tania Place
Tikipunga
Whangarei 0112
Phone:
09 437 0743
0800 845 477
Email:
admin@tikiprimary.school.nz
Office Hours:
8.00am—3.30pm

2025 TERM DATES:

Term 1
3 February – 11 April
Term 2
28 April – 27 June
Term 3
14 July – 19 September
Term 4
6 October – 16 December

SCHOOL HOURS:

School Begins 8.30am
Morning Tea
10.30am—11am
Lunch
1.00pm—1.30pm
School Finishes 2.30pm

GATES

Please remember that our gates are closed during the day.

ABSENCES:

Please let us know your child is absent before 9.45am. After this time, you will receive a text from the school. It is important for us to have great communication regarding absence.

HAVE YOU MOVED OR CHANGED YOUR PHONE NUMBER?

Please let Whaea Lena know so she can keep the records up to date. This really helps if we need to get in touch with you.

TIKI PRIDE presents
Whānau at the Falls



29th March - 12 to 4pm
 at OTUIHAU Whangārei Falls



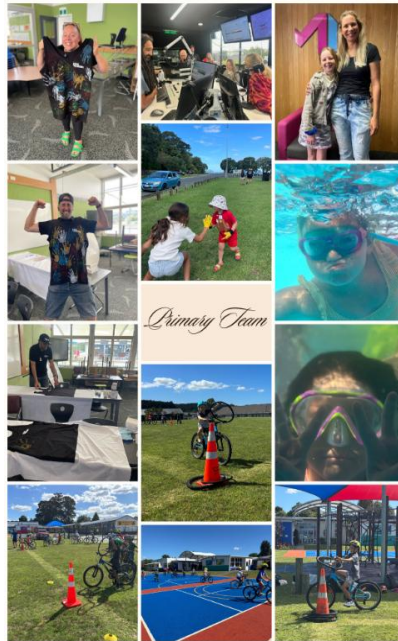
ENJOY A GREAT FAMILY DAY OUT

- Live music • Food stalls
- Games & Activities •




FOUNDATION NORTH
 Pūtea Kōwhiri Whangārei
 Fāhāngāhāngā Whangārei

Contact TikiPride on
 027 276 6957
 or email tikipride@gmail.com

Week 5 IHAD Activities

Join Girls' Brigade

Girls' Brigade invites you to join a fun, inclusive group for girls and young women aged 5 to 18 years, who want to make the most out of life. Joining a **Girls' Brigade** company is a great way for girls to make new friends and enjoy activities that challenge and nurture their growth in a safe and supportive environment.

There are two **Girls' Brigade** Companies in Whangarei, both meeting on Thursday nights.

- 1st Kamo Company:** Meets from 6.00 - 7.30pm at St John's Golden Church, 149 Kamo Road, Kensington. Contact Kerry 021 0230 4000
- 2nd Whangarei Company:** Meets from 5.30 - 7 pm at Hope Whangarei Church, Hunt St, Whangarei. Contact Sue 021 260 0792



Pop up Pump Track at Korau Road Reserve, Tikipunga

Dear Resident,

The Whangarei District Council are installing a 'pop up' pump track at Korau Road Reserve on Friday 21 February.

The installation will take one day with the bulk of the work happening in the reserve space behind the playground. The works do not require any traffic management or road closures.

Free for everyone to enjoy, the pump track is a modular track, made up of different pieces that can be packed up and moved from one place to another in one day.

The track will stay at Korau Road Reserve for approximately six months before it is moved to its next location.

The track includes a circuit of hills and bumps, rollers, banked turns and features designed to be ridden by scooters, skateboards and bike riders pumping to get momentum by up and down body movements, instead of pedalling or pushing.

No motorised vehicles or electric scooters are allowed on the track.

Visitors to the pump track can access Korau Road Reserve from Korau Road or Hinau Street. We are also recommending visitors bike, skate or scoot to the track from the Kamo Shared Path.

The pump track is fully funded by Central Government through the Waka Kotahi Transport Choices programme.

To find out more please visit:

www.wdc.govt.nz/Council/Projects/PopUpPumpTrack

2025 NETBALL SEASON

If your child wants to play netball this season but hasn't brought home a form, come and collect one from the office so we can get our teams made up. This is for Saturday Netball played at Kensington Stadium. Starts around early May.



Eat a range of healthy foods
 Kaingia ngā kai hauora

TIPS TO KEEP YOU SMILING

Fluoride in toothpaste helps prevent tooth decay

Avoid eating or drinking after brushing teeth. Especially at night so the fluoride can keep working to protect and strengthen teeth.

Need a dental appointment for your child?
0800 MY TEETH (0800 698 3384)
 Monday to Friday 8am to 4:30pm



Te Whatu Ora
 Health New Zealand

0800 698 3384
 (0800 MY TEETH)